

Directions

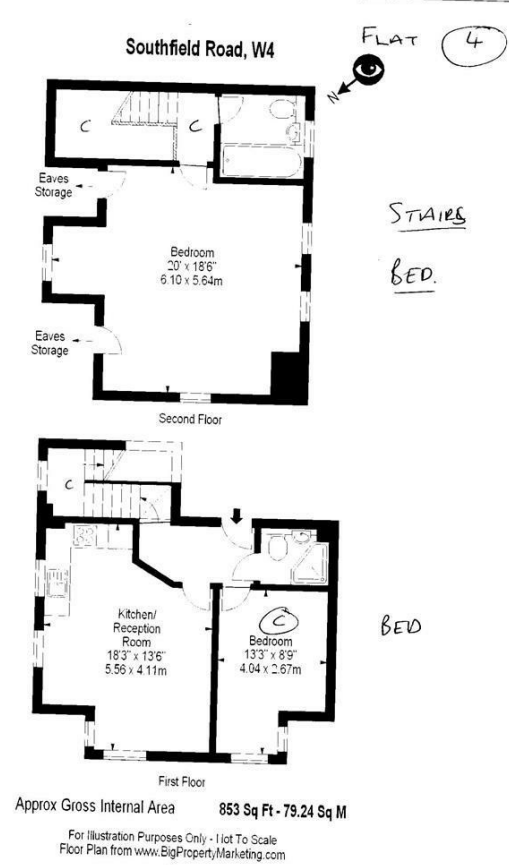
Viewings

Viewings by arrangement only. Call 02087436444 to make an appointment.

EPC Rating

C

| Energy Efficiency Rating | | Current | Potential |
|---|--|-------------------------|-----------|
| Very energy efficient - lower running costs | | | |
| (92 plus) A | | | |
| (81-91) B | | | |
| (69-80) C | | 76 | 78 |
| (55-68) D | | | |
| (39-54) E | | | |
| (21-38) F | | | |
| (1-20) G | | | |
| Not energy efficient - higher running costs | | | |
| England & Wales | | EU Directive 2002/91/EC | |



Flat 4 5 Southfield Road, Chiswick, London, W4 1AQ

£2,200 Per Month

Flat 4 5 Southfield Road, Chiswick W4 1AQ

Discover the perfect opportunity embrace comfortable and convenient living in the heart of Chiswick's desirable Southfields Road. Presenting a delightful two-bedroom flat that promises a harmonious blend of affordability and practicality, this residence is ideal for those seeking a quick and hassle-free move-in.

Nestled within a vibrant community, this home offers the best of both worlds, boasting proximity the buzz of city life while also providing a tranquil haven away from the hustle and bustle. Chiswick's renowned green spaces, including the beautiful Turnham Green and Chiswick House and Gardens, are just a stone's throw away, offering residents the chance unwind amidst nature's embrace.

Step inside and be greeted by a spacious and well-lit living area that serves as the perfect space for relaxation or entertaining friends and family. The two bedrooms provide ample room for comfortable living arrangements.

With a location that caters all your practical needs, you'll find an array of local amenities just moments from your doorstep. An abundance of shops, boutiques, and supermarkets awaits in Chiswick High Road, offering a delightful shopping experience. Additionally, excellent transport links, including nearby bus stops and Turnham Green Underground Station, provide effortless access central London and beyond.



Council Tax Band: D

